



GLOBAL VALVE
& CONTROLS



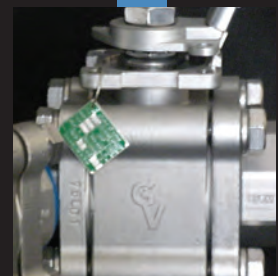
SERIES FS-525

HIGH PERFORMANCE

API 607 4TH EDITION COMPLIANT FIRE SAFE
THREE-PIECE FULL PORT BALL VALVE

Carbon Steel ■ 316SS ■ Alloy 20 ■ Hastelloy C ■ Low Temp

SERIES FS-525



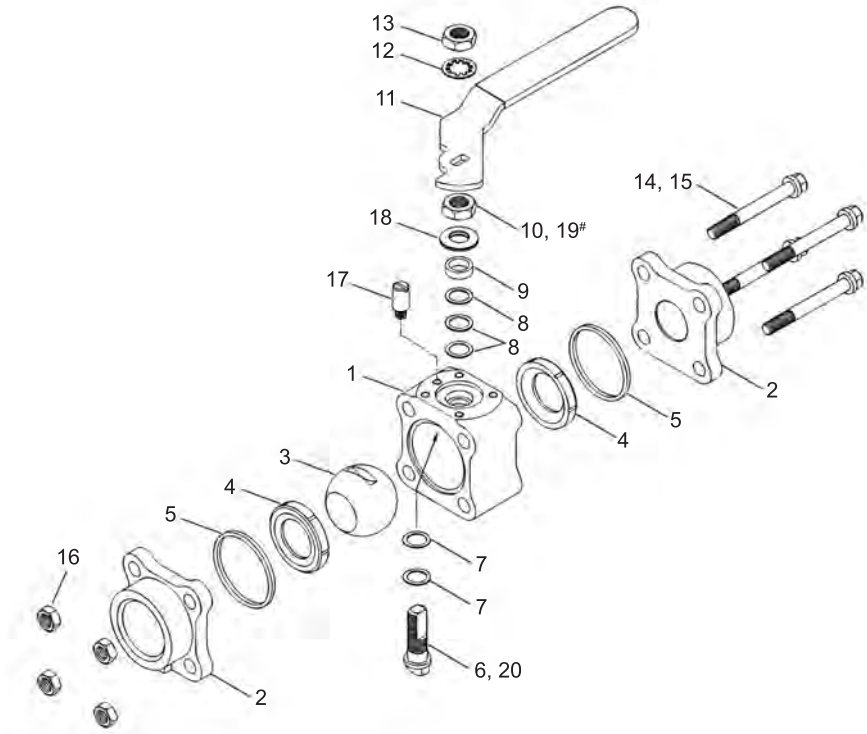
Providing Hundreds of Products. Supporting Thousands of Clients. Controlling Millions of Gallons.

Depend On Us, We Can Handle The Pressure.



MATERIALS OF CONSTRUCTION

SERIES FS-525

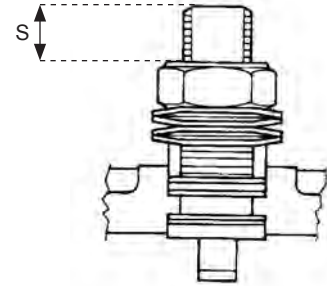
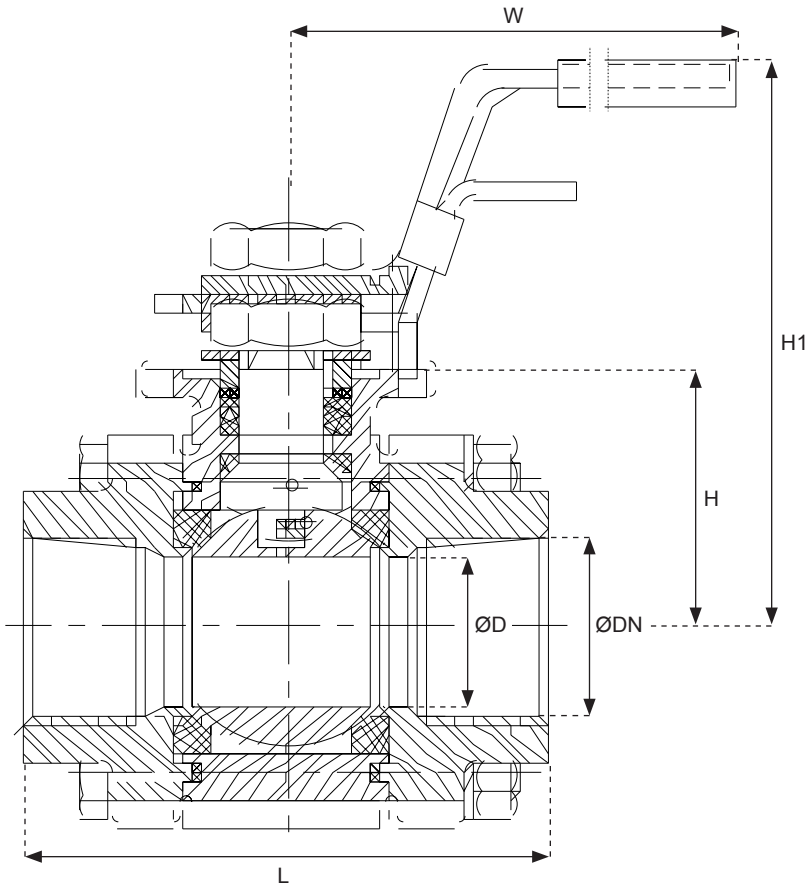


NO.	PART NAME	MATERIAL
1	Body	Carbon Steel - ASTM A216 WCB 316SS - ASTM A351 CF8M Alloy 20 - ASTM A351 CN7M Hastelloy C - ASTM A494 Cw12MW
2	Valve End (threaded shown)	Carbon Steel - ASTM A216 WCB 316SS - ASTM A351 CF8M Alloy 20 - ASTM A351 CN7M Hastelloy C - ASTM A494 Cw12MW
3	Ball	316SS, Monel, Alloy 20, Hastelloy C
4	Seat	TFE, Reinforced TFE, NOVA*, Derlin, UHMWPE, PEEK, TFM**
5	Body Gasket	Grafoil
6	Stem	316SS, Monel, Alloy 20, Hastelloy C
7	Thrust Bearing	50% SS + 50% RTFE
8	Stem Packing	Grafoil
9	Packing Gland	304 Stainless Steel
10	Stem Nut	304 Stainless Steel
11	Handle	304 Stainless Steel
12	Handle Washer	304 Stainless Steel
13	Handle Nut	304 Stainless Steel
14	Body Bolts	304 Stainless Steel, B7, Alloy 20
15	Body Washers	304 Stainless Steel
16	Body Nuts	304 Stainless Steel, 2H, Alloy 20
17	Stop Screw	304 Stainless Steel
18	Belleville Washer	301 Stainless Steel
19	Stop Washer	304 Stainless Steel
20	Anti-Static Device	316 Stainless Steel

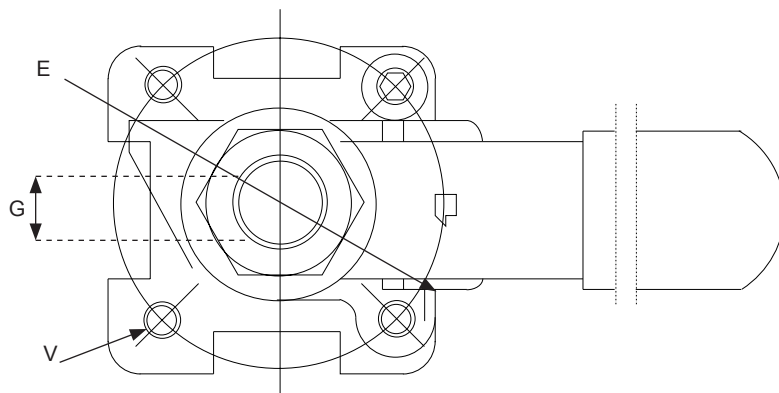
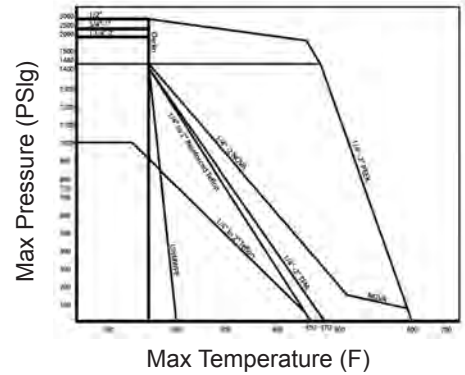
* NOVA - Carbon and Graphite-Filled Teflon®
 ** TFM - Hastafion Modified PTFE and PFA
 © Registered Trademark of E.I. DuPont

ENGINEERING DATA

SERIES FS-525



Pressure Temperature Chart



Manufacturing & Testing Standards

Body Wall Thickness	ASME B16.34
SW & Threaded Ends	ASME B16.11
Butt Weld Ends	ASME B16.25
Flanged Dimensions	ASME B16.5
Basic Design	ASME B16.34, API 608
Testing (Options)	ASME B16.34, API 598
Firesafe	API 607 4th Edition

Size	ØD	L	H	H1	W	V	G	E	ØDN
1/4"	10.6	70.0	30.0	76.0	135.0	M5	6.3	42.0	NPT 8ZP PT 01N ETC
3/8"	12.7	70.0	30.0	76.0	135.0	M5	6.3	42.0	
1/2"	15.0	75.0	36.0	83.0	135.0	M5	6.3	42.0	
3/4"	20.0	80.0	39.5	83.0	135.0	M5	6.3	42.0	
1"	25.0	90.0	45.5	98.0	170.0	M6	9.0	50.0	
1-1/4"	32.0	110.0	50.0	103.0	170.0	M6	9.0	50.0	
1-1/2"	33.0	120.0	60.0	110.0	200.0	M8	9.6	70.0	
2"	50.0	140.0	68.0	119.0	200.0	M8	9.6	70.0	

Size	Estimated CV Factor	Estimated Weight
1/4"	13	1.80
3/8"	24	1.80
1/2"	35	2.05
3/4"	63	4
1"	93	6
1-1/4"	149	12
1-1/2"	223	12
2"	478	19

Units in mm (Approximate measurements - please contact GVC for precise dimensions)

FEATURES & OPTIONS

- API 607 4th Edition Fire Safe Design
- 3-piece swing-out design allows for inline repair without disrupting piping
- Interchangeable connector ends for maximum versatility
- Bottom entry live loaded stem automatically adjusts with pressure and temperature changes
- High cycle stem packing such as NOVA with PEEK thrust washers are available and significantly increase MTBF
- Fully encapsulated body seals prevent seal rupture in steam or high pressure services
- ISO 5211 integral mounting pad allows for easy mounting of actuators or media containment bonnets
- OSHA compliant locking handle standard
- NACE MR0175 compliant
- Self-cleaning, leak-tight slotted seat design
- Wide choice of seat options
- Variety of end combinations
- Floating ball design
- Encapsulated body bolt design protects valve body bolting from hostile environments
- Traceability in the form of heat numbers and CMTRs are available
- Media Containment Bonnet units available

ORDERING INFORMATION

Size	Series	Body	Trim	Seats	Seals	Ends	Options
1/2"	FS-525	1 - Carbon Steel	1 - Carbon Steel	D - Delrin	G - Grafoil	BW - Butt Weld	OH - Oval Handle MCB - Media Containment Bonnet SE - Stem Extension FBT - Flush Bottom Tank
3/4"		2 - Alloy 20	2 - Alloy 20	H - TFM			
1"		3 - 316SS	3 - 316SS	N - Nova			
1-1/4"		5 - Hastelloy C	4 - A276 Grade 410	P - PEEK			
1-1/2"		L - A350 Grade LF2	5 - Hastelloy C	R - Reinforced Teflon			
2"		X - Special	X - Special	T - Teflon U - UHMWPE			

- 2"FS52533RGTEFBT

CROSS REFERENCE GUIDE

GVC	Apollo	Worcester	Jamesbury	SVF	Flo-Tek	Sharpe
Series FS525	87-700	44	4000	B7	TRIAD	99

PLEASE NOTE: The above chart is to cross reference other manufacturer's valves comparable to the GVC FS-525. There may be some performance variations between the GVC FS-525 and the above referenced manufacturer's designs. To ensure the longevity of performance, please provide specific information relevant to the requirements needed for each application process.



Office Local 281.463.1474
 Fax Numbers 866.964.8536 ▪ 281.463.7735
 8535 Jackrabbit Rd., Ste 1
 Houston, Texas 77095
www.GlobalValveandControls.com
 866.965.86VC (482)

